

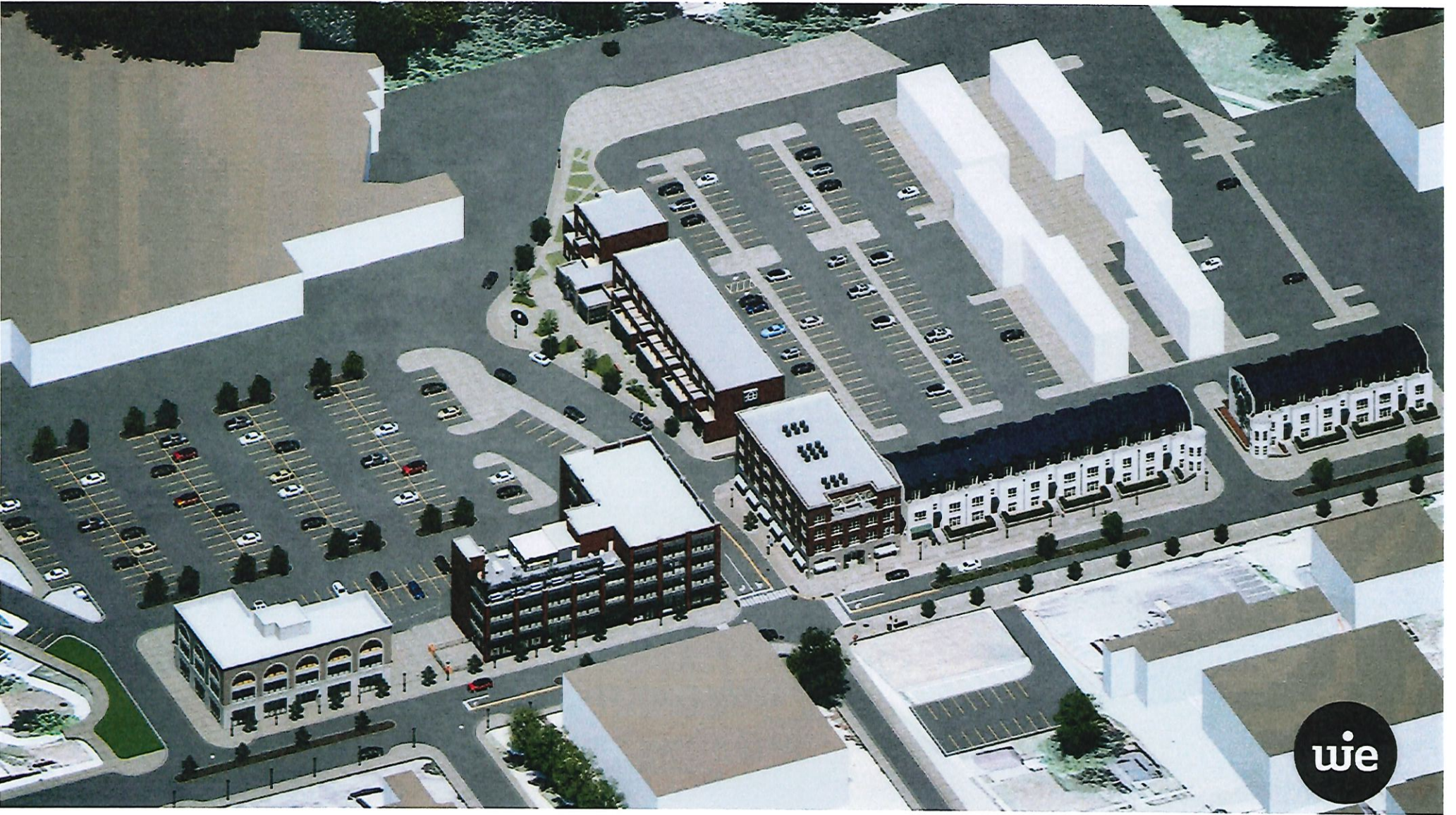
Sandi



**Elkhart River District
Zones 2 & 3**

Prepared for Redevelopment Commission
June 11, 2024





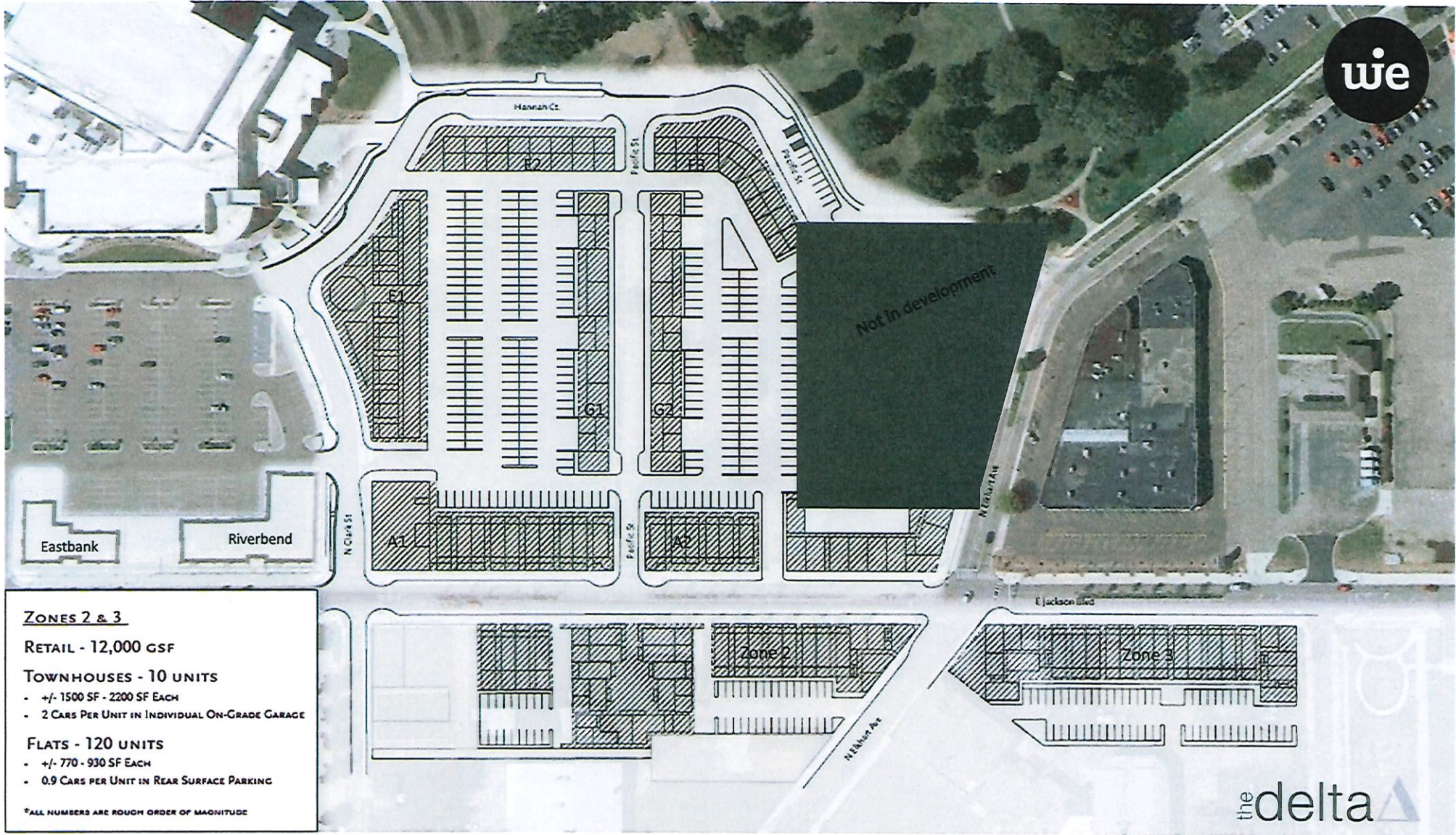


we





we



ZONES 2 & 3

RETAIL - 12,000 GSF

TOWNHOUSES - 10 UNITS

- +/- 1500 SF - 2200 SF EACH
- 2 CARS PER UNIT IN INDIVIDUAL ON-GRADE GARAGE

FLATS - 120 UNITS

- +/- 770 - 930 SF EACH
- 0.9 CARS PER UNIT IN REAR SURFACE PARKING

*ALL NUMBERS ARE ROUGH ORDER OF MAGNITUDE

